



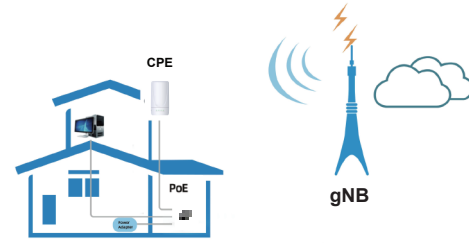
5G Auto-alignment Outdoor CPE

TD0612

Quick Start Guide ▶

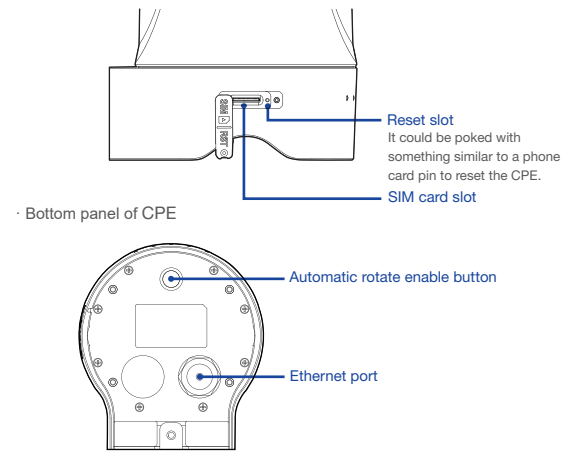
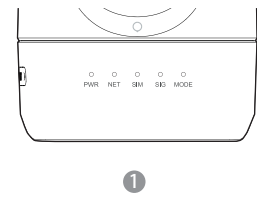
Introduction

TD0612 supports various 4G/5G spectrums and ultra high speed and has built-in high-gain directional antennas to expand signal coverage. Also, it has rotated mechanism design to find best signal and keep device in the best position without manual adjustment. Up to IP65 with water-proof, shock-resistant, and lightning-proof, combined to ensure the quality of wireless communication under different outdoor environments.



Panel of device

I/O panel of CPE



Packing list

Make sure you have everything you need to properly configure the device.

CPE	PoE	Power supply	Ethernet cable
Stainless steel clamp	Cable glands	Hexagon torx handle screw	Fixed trestle

Tips: The diameter of the clamp should range from 80 to 110mm

How does it work

1. Connect the Power Adapter to PoE injector.
2. PoE injector provides the power to CPE via Ethernet cable.
3. PC connects LAN Cable to PoE, then PC can surf the Internet when CPE accesses the LTE network.

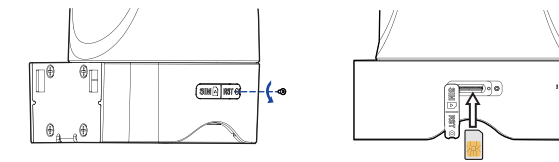
This quick installation guide shows you how to configure your CPE in order to access the Internet.

Configure hardware

CAUTION Please make sure that you are familiar with all accident prevention and safety procedures necessary for working at height and with electricity before starting to install the device. DO NOT install the CPE during a lightning storm.

Insert a SIM card to the slot

CAUTION Make sure the CPE is turned off before you insert your SIM card. It is recommended to Not to connect the PoE cable when you do this step. Otherwise, the SIM card may be damaged.



Remove the screw using a screwdriver.

Insert the SIM card in the SIM card slot. When a "click" is heard, the SIM card is installed.

Mount the CPE

To connect the high speed Ethernet cable:

See the installation instructions to mount the CPE correctly.

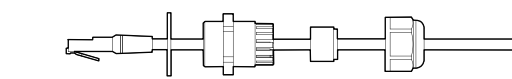
Step 1 High speed cable to thread through the cable glands.

Step 2 Connect the end of the high speed Ethernet cable to the PoE port of the CPE.

Step 3 Wiring the cable glands into CPE and seal tightly.

NOTE: Make sure you have inserted the SIM card into the CPE.

Header connection

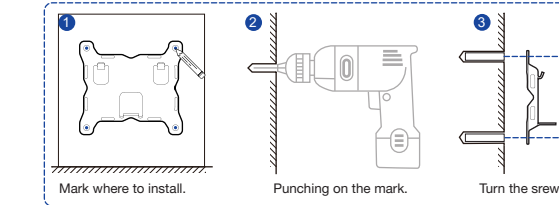


In order to waterproof, separate the plugs and then separate through the cable in the sequence shown in the figure.

Mounting bracket

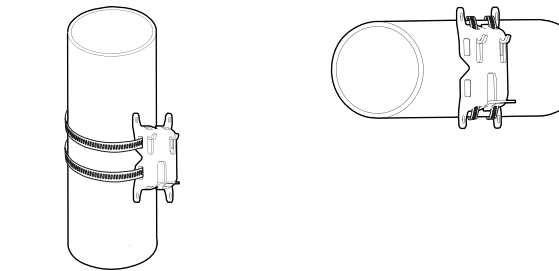
These are 3 ways to install the brackets as below figures.

On the wall, install the bracket on the wall where the hole has been punched;

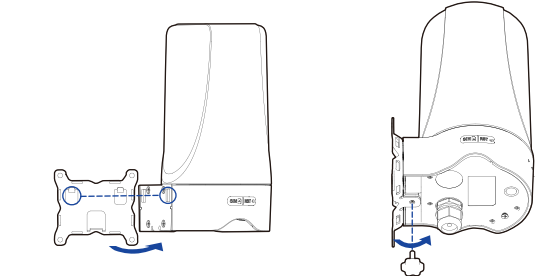


On the montant, pass the hoop through the bracket and install it on the montant;

On the cross-bar, pass the hoop through the bracket and install it on cross-bar.



After the bracket installation, please install the ODU to the bracket as the below picture.



How to choose the best location

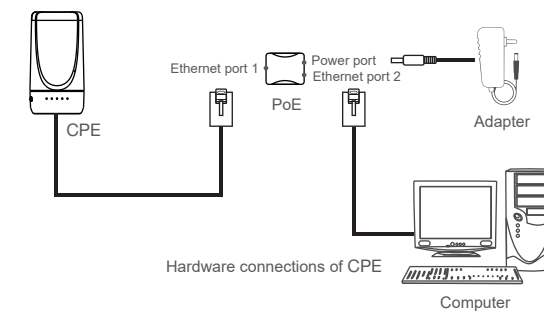
There are three ways to get the best point:

1. Customer calls the operator to get the location of nearby base station.
2. If there is an operator after-sales website, customer could log in to find the recommended installation directions.

Connect the PoE

Place a high speed Ethernet cable (not included) from the location of your intended CPE to the desired PC location.

If you intend to use cable clamps or other methods to secure the cable, do not tighten them until you finish installing CPE.



Step 1 Connect the CPE to the Ethernet port 1 of the PoE with Ethernet cable;

Step2 At the other end of the PoE (which has a circular power port and a Ethernet port 2), the Ethernet port 2 is connected to the Ethernet port of the PC with a Ethernet cable, and the power port is connected to the power adapter.

CAUTION If the port is incorrectly connected, the network port on the PC will be burned out.

The function auto alignment is on by default. There are several ways to configure the function:

1. Press the circle button 5 seconds by annual at botom of the device when the device is power on;

Note: Pressing the bottom button during automatic alignment, it will not work.

2. Log in the web or app and click the function button in the menu: Advanced Settings-Network-Rotate CPE;

3. When the function is on, the device is powered on every time, the device will be turned to align itself.

LED behavior

When setting up the CPE, the LED will have the following behavior:

Indicator	Status	Description
PWR	Green	Power on
	Off	No power supply
NET	Green	CPE is attached to 4G network
	Blue	CPE is attached to 5G network
	Green&Blue	ENDC is activated
	Green&Blue flashes every 0.5s	CPE is searching the network
SIM	Off	No network
	Green	SIM card is detected
	Off	SIM card is not detected
SIG	Green	RSRP >-110 dBm
	Blue	RSRP -110~-120 dBm
	Red	RSRP <-120 dBm
	Off	No network
	Green&Blue&Red flashes every 0.25s	Firmware upgrading
MODE	Green	Antenna rotation function is enabled
	Green flashes every 0.5s	Antenna is rotating
	Red	Antenna rotation function is in error

Configure the CPE

Login to the website

Use a browser to access the management web page to configure and manage the CPE.

The following procedure describes how to use a computer running Windows 7 or above version and Internet Explorer to connect to the CPE webpage.

Step 1 Connect to the CPE correctly.

Step 2 Start Internet Explorer, type http://192.168.225.1 in the address bar, and press Enter.

Step 3 Enter the user name and password, and click Log In. (The user name and password are shown on the body tag at the bottom of the CPE.)

You can connect to the management web page after the password is verified.

Configuration of Radio

Step 1 Connect to the CPE correctly.

Step 2 Login the CPE.

Step 3 Choose Advanced Settings->Network->Radio Settings.

Settings

Status: Connected

Connect Method: Auto

4G Status | 5G Status

DL Frequency	1815.000MHz
UL Frequency	1720.000MHz
Band	3
Bandwidth	20MHz
RSRP	-81dBm
RSSI	-88dBm
RSRQ	-12dB
SINR	10dB
TX Power	1.0dBm
PCI	127
Cell ID	16
MCC	460
MNC	00

The default setting is automatic connection and full band scanning, if you want to connect to the 4G/5G network according to your needs, you can set the connection mode as manual, and simply scan a specific band.

FAQs

The power indicator does not turn on.

- Make sure that the power cable is connected to the PoE, and the CPE is connected to the right port of the PoE.
- Make sure that the power adapter and PoE are compatible with the CPE.

Fails to log in to the web management page.

- Make sure that the CPE is powered on.
- Verify that the CPE is correctly connected to the computer through a network cable.
- If the problem persists, contact authorized local service suppliers.

The CPE fails to search for the 5G/LTE network.

- Check that the power adapter and PoE have connected to the CPE properly.
- Check that the CPE is placed in an open area that is far away from obstructions, such as concrete or wooden walls.
- Check that the CPE is placed far away from household electrical appliances that generate strong electromagnetic field, such as microwave ovens, refrigerators, and satellite dishes.

- If the problem persists, contact your Internet Service Provider.

The CPE power adapter has overheated

- The CPE is hot after being used for long time. Turn off the CPE when not in use.
- Check that the CPE is properly ventilated and protected from direct sunlight.

The CPE could not automatic align itself.

- Make sure the CPE is powered on;
- Check if the light "MODE" is green, try to click "Start Search" in network or press the button at botom of the device.
- Check if the light "MODE" is red, the function may be damaged, try to restart the device or restore the device to check if the device is normal.

The parameters are restored to default values.

- If the CPE powers off unexpectedly while being configured, the parameters may be restored to the default settings.
- After configuring the parameters, download the configuration file to quickly restore the CPE to the desired settings.

Notice

Some features of the product and its accessories described herein rely on the software installed, capacities and settings of local network, and may not be activated or may be limited by local network operators or network service providers, thus the descriptions herein may not exactly match the product or its accessories you purchase. We reserve the right to change or modify any information or specifications contained in this manual without prior notice or obligation.